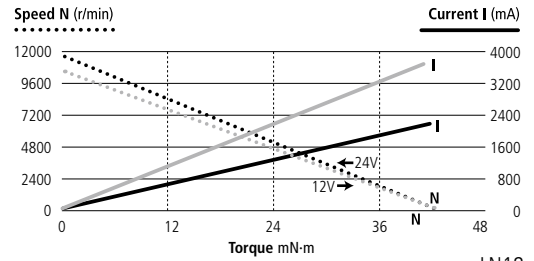
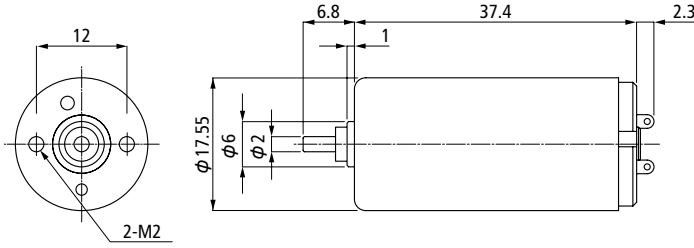


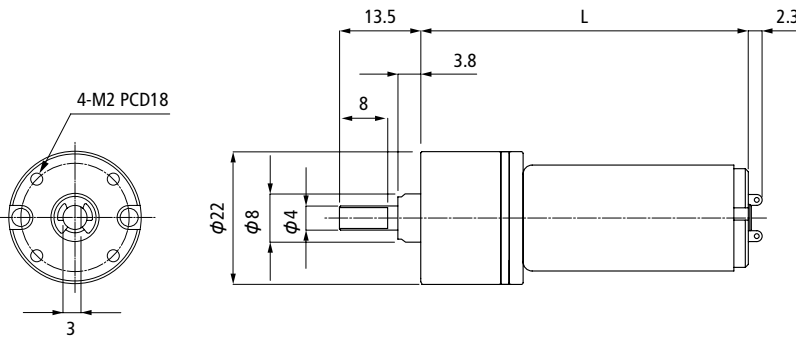
CL18 Series



LN18

MODEL	Rated Voltage	Rated Power Output	Rated Torque	Rated Speed	Rated Current	No Load Speed	No Load Current	Starting Torque	Starting Current	Torque Constant	Rotation	Moment of Inertia	Weight
	V	W	mN·m(gf·cm)	r/min	mA	r/min	mA	mN·m(gf·cm)	mA	mN·m/(A·gf·cm/A)	CW/CCW	g·cm ²	g
CL18	12	4.72	4.90 (50)	9200	500	10500	25	37.3 (380)	3800	10.3 (105)	CW/CCW	1.9	45

CL18 + Gear Head (Planetary Gear)



MODEL(Gear Ratio)	Rated Voltage	Rated Torque	Rated Speed	Rated Current	No Load Speed	No Load Current	Total Length
	V	mN·m(gf·cm)	r/min	mA	r/min	mA	mm
LG18 (1/ 20)	12	29.4 (300)	355	170	375	45	54.4
LG18 (1/ 62)	12	78.5 (800)	115	165	120	45	58.1
LG18 (1/ 107)	12	98.1 (1000)	68	130	70	45	58.1
LG18 (1/ 242)	12	147.0 (1500)	30	110	31	50	61.8
LG18 (1/ 410)	12	196.0 (2000)	18	100	19	50	61.8

LG18: CL18+Gear Head

Please inquire for the variants of different input voltages.