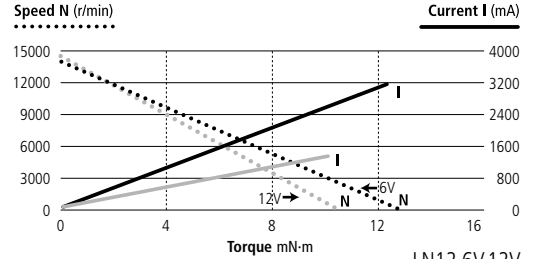
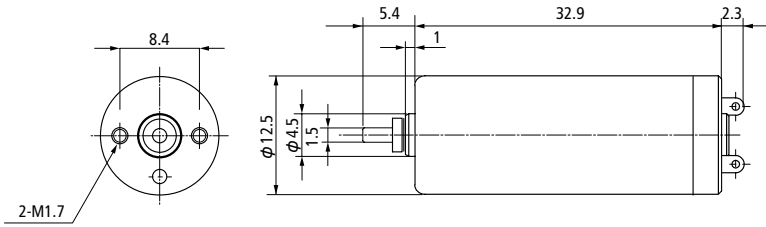


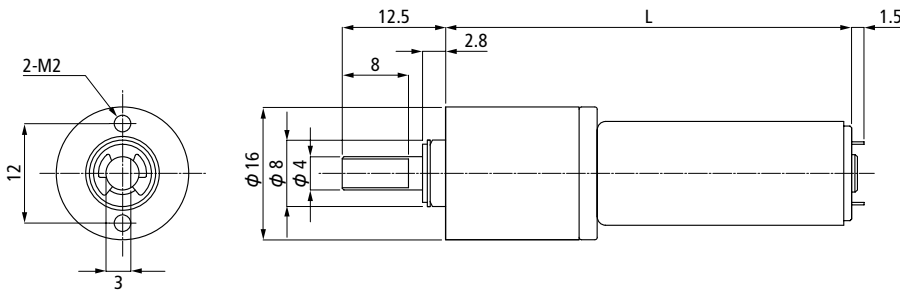
CL12 Series



MODEL	Rated Voltage	Rated Power Output	Rated Torque	Rated Speed	Rated Current	No Load Speed	No Load Current	Starting Torque	Starting Current	Torque Constant	Winding Resistance	Winding Inductance	Moment of Inertia	Mechanical Time Constant
	V	W	mN·m(gf·cm)	r/min	mA	r/min	mA	mN·m(gf·cm)	mA	mN·m/A(gf·cm/A)	Ω	mH	g·cm ²	ms
CL12	6	1.32	0.98 (10)	12850	280	14000	32	11.93 (121.7)	3051	3.95(40.3)	1.9	0.03	0.34	4.1
CL12	12	1.32	0.98 (10)	12900	170	14300	36	10.01(102.1)	1405	7.31(74.6)	8.6	0.076	0.34	5.6

Please inquire for the variants of different input voltages.

CL12 + Gear Head (Planetary Gear)



MODEL(Gear Ratio)	Rated Voltage	Rated Torque	Rated Speed	Rated Current	No Load Speed	No Load Current	Total Length
	V	mN·m(gf·cm)	r/min	mA	r/min	mA	mm
LG12 (1/ 20)	6	11.8 (120)	415	180	455	55	49.1
LG12 (1/ 62)	6	29.4 (300)	135	170	145	65	52.8
LG12 (1/ 107)	6	49.1 (500)	80	170	85	65	52.8
LG12 (1/ 242)	6	98.1 (1000)	35	170	37	75	56.5
LG12 (1/ 410)	6	147.0 (1500)	20	160	22	75	56.5

LG12: LN12+Gear Head

Please inquire for the variants of different input voltages.