



ERS-755SH

EVERMO®
DC MICRO MOTOR
 Carbon-brush motors

OUTPUT :14W~145W (APPROX)

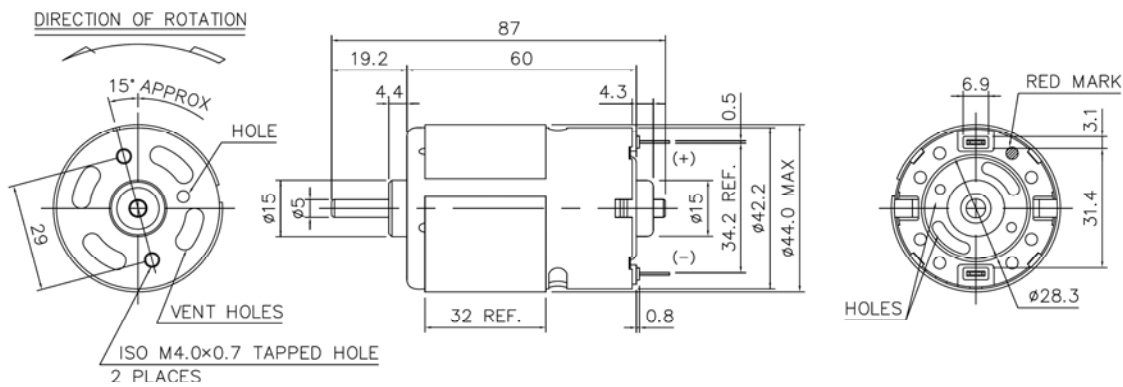
WEIGHT : 286g (APPROX)

Typical Applications **Cordless Power Tools:** Drill, Cordless Garden Tool, Circular Saw
Office Automation Equipment: Printer, Copy Machine

Typical Specifications

MODEL	VOLTAGE		NO LOAD		AT MAXIMUM EFFICIENCY					STALL			
	OPERATING RANGE	NOMINAL	SPEED r/min	CURRENT A	SPEED r/min	CURRENT A	TORQUE g.cm	TORQUE mNm	OUTPUT W	EFF. %	TORQUE A	TORQUE g.cm	CURRENT mNm
ERS755SH-5027F	6.0~12.0	12.0V CONSTANT	10000	1.40	8400	4.87	466	45.68	40.56	71	29.26	3258	319.41
ERS755SH-3262	12.0~24.0	24.0V CONSTANT	8900	0.45	7400	2.11	442	43.33	33.93	67	12.22	3079	301.86
ERS755SH-8512F	6.0~9.6	9.6V CONSTANT	16700	2.80	14000	19.81	1002	98.24	144.12	76	112.61	6480	635.29
ERS755SH-19175	12.0~36.0	36.0V CONSTANT	4800	0.18	3900	0.61	343	33.63	13.83	65	2.71	1870	183.33
ERS-755SH-7512R	3.0~6.0	6.0V CONSTANT	9500	2.26	8123	9.31	460	45.08	38.21	69	66.34	3130	306.74
ERS-755SH-2980R	12.0~24.0	24.0V CONSTANT	5860	0.20	5178	0.97	374	36.66	19.5	84	10.0	2670	261.66

◎NOTE: 1)Casing ring 2) Ring varister 3) Capacitor for options only.



Usable male screw length 5.0 max from motor mounting surface.

WEIGHT: 270g (APPROX)

Usable machines screw length 4.0max from motor mounting surface.

UNIT: MILLIMETERS