



# ERS-750SH

**EVERMO®**  
**DC MICRO MOTOR**  
 Carbon-brush motors

OUTPUT :11W~108W (APPROX)

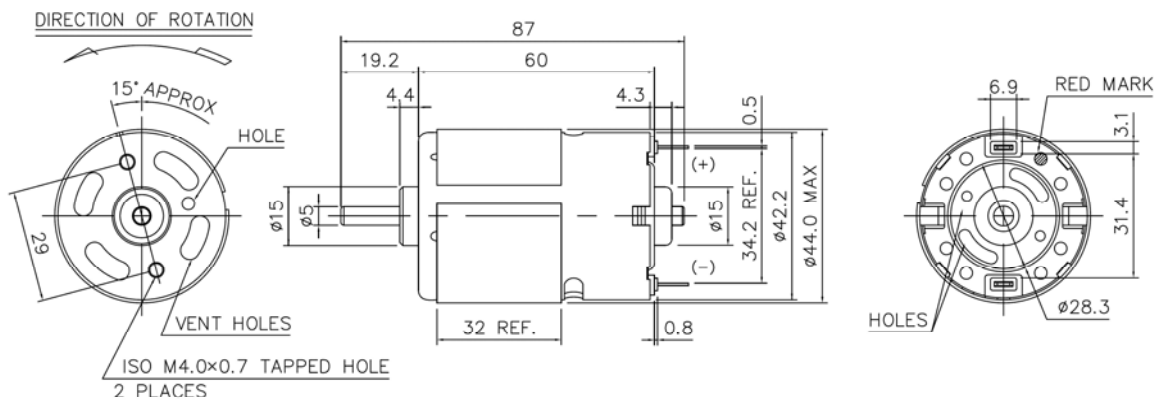
WEIGHT :286 g (APPROX)

**Typical Applications**    **Cordless Power Tools:** Drill, Cordless Garden Tool, Circular Saw  
**Office Automation Equipment:** Printer, Copy Machine

## Typical Specifications

| MODEL            | VOLTAGE         |                | NO LOAD     |           | AT MAXIMUM EFFICIENCY |           |             |            |          |        | STALL    |             |             |
|------------------|-----------------|----------------|-------------|-----------|-----------------------|-----------|-------------|------------|----------|--------|----------|-------------|-------------|
|                  | OPERATING RANGE | NOMINAL        | SPEED r/min | CURRENT A | SPEED r/min           | CURRENT A | TORQUE g.cm | TORQUE mNm | OUTPUT W | EFF. % | TORQUE A | TORQUE g.cm | CURRENT mNm |
| ERS750SH-9013    | 3.0~6.0         | 6.0V CONSTANT  | 19000       | 4.00      | 16800                 | 19.27     | 477         | 46.67      | 82.74    | 72     | 112.22   | 3490        | 342.16      |
| ERS750SH-8028    | 6.0~12.0        | 12.0V CONSTANT | 18800       | 2.60      | 15500                 | 12.78     | 673         | 65.98      | 107.32   | 70     | 92.08    | 4900        | 480.39      |
| ERS750SH-4570    | 6.0~24.0        | 12.0V CONSTANT | 7500        | 0.75      | 6300                  | 4.28      | 529         | 51.86      | 34.65    | 69     | 22.48    | 3120        | 305.88      |
| ERS750SH-32160   | 12.0~36.0       | 12.0V CONSTANT | 3200        | 0.36      | 2600                  | 1.36      | 387         | 37.94      | 10.50    | 65     | 6.14     | 2140        | 209.80      |
| ERS-750SH-7032R  | 6.0~12.0        | 12.0V CONSTANT | 15000       | 1.79      | 12671                 | 7.52      | 496         | 48.61      | 66.61    | 73.93  | 55.6     | 4010        | 392.98      |
| ERS-750SH-29195R | 12.0~24.0       | 24.0V CONSTANT | 5000        | 0.19      | 4470                  | 0.79      | 348         | 34.11      | 15.48    | 81.33  | 9.72     | 2280        | 223.44      |

◎NOTE: 1)Casing ring 2) Ring varister 3) Capacitor for options only.



Usable male screw length 5.0 max from motor mounting surface.

WEIGHT: 270g (APPROX)

Usable machines screw length 4.0max from motor mounting surface.

UNIT: MILLIMETERS