



ERS-545SA

EVERMO®
DC MICRO MOTOR
 Carbon-brush motors

OUTPUT :3.2W~22W (APPROX)

WEIGHT : 146g (APPROX)

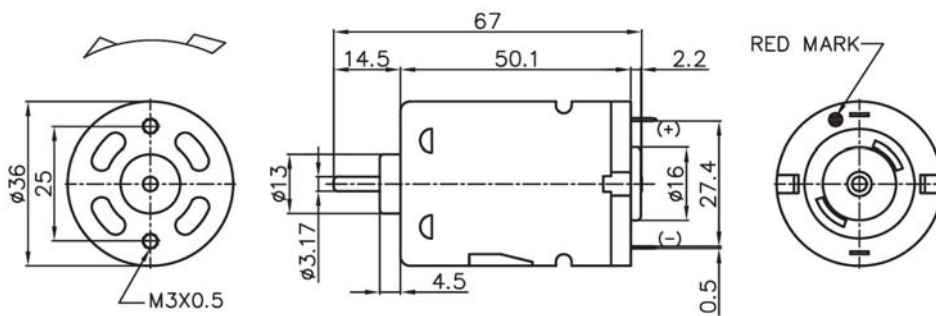
Typical Applications Home Appliances : Hair Dryer, Vending Machine, Geared Motor

Typical Specifications

MODEL	VOLTAGE		NO LOAD		AT MAXIMUM EFFICIENCY						STALL		
	OPERATING RANGE	NOMINAL	SPEED r/min	CURRENT A	SPEED r/min	CURRENT A	TORQUE		OUTPUT W	EFF. %	TORQUE		CURRENT
							g.cm	mNm			A	g.cm	mNm
ERS545SA-4525	6.0~12.0	6.0V CONSTANT	8700	1.00	6800	3.30	190	18.63	13.25	66	12.10	880	86.27
ERS545SA-16200	12.0~24.0	24.0V CONSTANT	4100	0.60	3500	0.24	96	9.41	3.49	66	1.41	738	72.35
ERS545SA-20120	12.0~24.0	12.0V CONSTANT	3100	0.12	2300	0.47	129	12.65	3.17	56	1.79	612	60.00
ERS545SA-20130	12.0~24.0	24.0V CONSTANT	5600	0.12	4600	0.51	161	15.78	7.71	66	2.90	1148	112.55
ERS-545SA-21116	12.0~24.0	24.0V CONSTANT	6600	0.12	5761	0.57	180.6	17.70	10.52	76.97	4.13	1350	132.3
ERS-545SA-22105	15.0~30.0	30.0 V CONSTANT	10600	0.17	9062	1.0	232	22.74	21.6	71.9	5.9	1600	156.8

◎NOTE: 1)Casing ring 2) Ring varister 3) Capacitor for options only.

DIRECTION OF ROTATION



Usable machines screw length 4.0max.from motor mounting surface.

UNIT:MILLIMETERS