



ERS-385SH

OUTPUT :1.8W~25W (APPROX)

WEIGHT : 71g (APPROX)

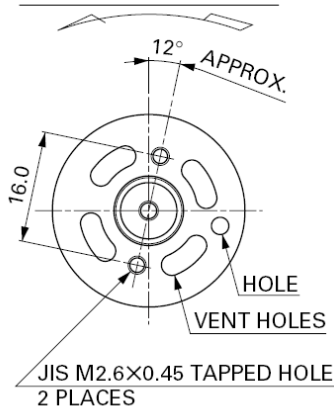
Typical Applications Home Appliances : Hair Dryer, Vending Machine, Geared Motor

Typical Specifications

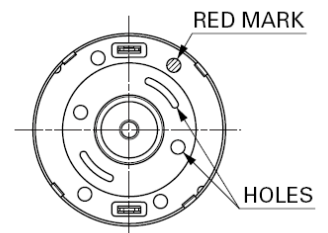
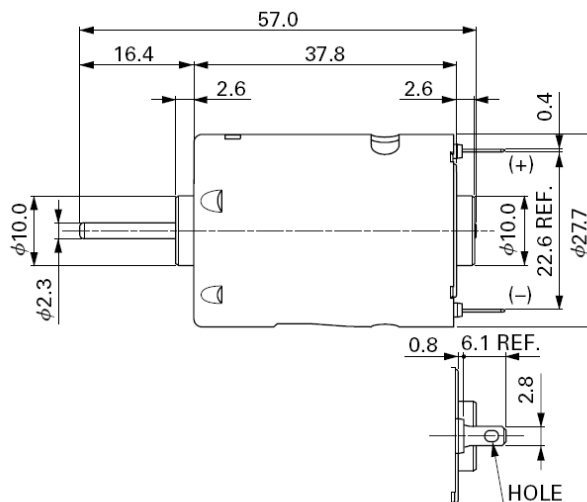
MODEL	VOLTAGE		NO LOAD		AT MAXIMUM EFFICIENCY						STALL		
	OPERATING RANGE	NOMINAL	SPEED r/min	CURRENT A	SPEED r/min	CURRENT A	TORQUE g.cm	TORQUE mNm	OUTPUT W	EFF. %	TORQUE A	TORQUE g.cm	CURRENT mNm
ERS385SH-3035	6.0~12.0	12.0V CONSTANT	17500	0.50	14600	2.93	159	15.59	24.03	68	13.45	864	84.71
ERS385SH-3019	2.4~6.0	2.4V CONSTANT	6500	0.50	4900	1.84	45	4.41	2.30	53	6.69	212	20.78
ERS385SH-15145	12.0~24.0	12.0V CONSTANT	4300	0.06	3400	0.26	49	4.80	1.73	57	1.04	255	25.00
ERS385SH-16120	12.0~24.0	24.0V CONSTANT	9700	0.08	8200	0.46	82	8.04	7.01	66	2.61	570	55.88

◎NOTE: 1)Casing ring 2) Ring varister 3) Capacitor for options only.

DIRECTION OF ROTATION



Usable machine screw length 4.0 max. from motor mounting surface.



UNIT: MILLIMETERS